

# Multi-chamber incubation trays

Convenient, easy to use partitioned trays for staining and washing gels and membranes

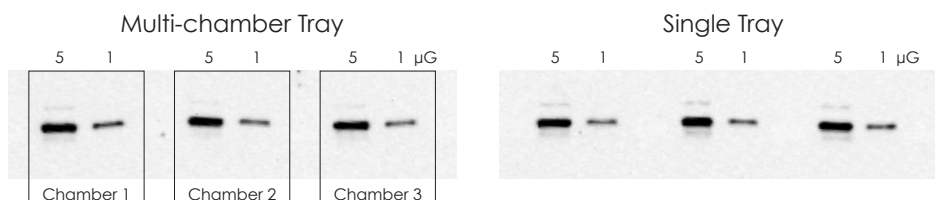
These specially designed incubation trays are ideal for staining and washing electrophoresis gels and membranes that have been partitioned. Each **Multi-chamber incubation tray** is partitioned into six chambers that measure 2.7 x 8.1 cm.



## Advantages

- **INCREASE THROUGHPUT** – process 6 blots simultaneously
- **DEEP WELLS** – can be used on shakers without spillage
- **ECONOMICAL** – greatly reduce reagent usage, each chamber requires as little as 3mL of solution
- **SMOOTH INTERIOR** – protects membranes from scratches
- **ATTACHED LID** – to protect experiments from dust or debris that can cause speckles on blot images

## Reproducible results



Western blot membranes processed in **Multi-chamber incubation trays** are comparable to standard incubation trays. HeLa cell lysate was separated by SDS-PAGE and transferred to a PVDF membrane. An intact membrane was processed side-by-side a membrane that was partitioned and incubated in three chambers of a multi-chamber incubation tray. The membranes were blocked with AdvanBlock™-Chemi before incubation with a rabbit anti-human STAT-1 (Millipore #06-501) primary antibody. Signal was detected with WesternBright® ECL substrate.

## Ordering Information

Catalog Number	Product		Size
L-07080-002	Multi-chamber incubation trays	17.15 x 8.10 x 3.02 cm	2 trays

## Related Product

K-12045-D20	WesternBright® ECL Western Blotting HRP Substrate	for 2000 cm <sup>2</sup> membrane	200 ml
-------------	---------------------------------------------------	-----------------------------------	--------

## Advansta Corporation

2140 Bering Drive | San Jose, CA 95131

Tel: 650.325.1980 | Fax: 650.325.1904 | Email: [sales@advansta.com](mailto:sales@advansta.com)

Product information: [www.advansta.com/products/incubation-trays](http://www.advansta.com/products/incubation-trays)

Copyright © 2017 Advansta. All rights reserved. The Advansta logo is a registered trademark of the Company. AdvanBlock™ and WesternBright™ are trademarks of the Company. All other trademarks, service marks and tradenames appearing in this brochure are the property of their respective owners.

[www.advansta.com](http://www.advansta.com)

