



Advansta Inc.
2140 Bering Drive
San Jose, CA 95131

(650) 325-1980
(650) 325-1904 FAX
www.advansta.com

PRODUCT DATA SHEET

Part number(s): K-12043-D10

Lot number(s): 160712-30

WesternBright® Sirius®

Chemiluminescent HRP Substrate

Product description:

Two-component substrate for chemiluminescent detection of Western blots. The kit is compatible with secondary antibodies conjugated with Horseradish Peroxidase.

The kit contains sufficient reagents to prepare up to 100mL of the final working substrate solution.

To prepare the working formulation, mix equal volume aliquots of each component.

Components and storage conditions:

R-03027-C50 Component 1 (luminol/enhancer solution) 50 ml

Almost colorless to slightly colored solution packaged in amber polyethylene bottle.

R-03025-C50 Component 2 (stabilized peroxide solution) 50 ml

Colorless solution packaged in clear (natural) polyethylene bottle. Solution is typically clear, however some amorphous white precipitation may occur. The precipitate does not affect the performance of the product. If present, do NOT remove or filter out the precipitate. Removing it may reduce the shelf life.

Both reagents should be stored at room temperature.

Do NOT refrigerate. Refrigerated storage REDUCES shelf life.

If reagents were refrigerated, equilibrate at room temperature for at least 24 hours before opening bottles.

Shelf life:

Unopened components are stable at least for one year after the delivery to the end user, if stored at room temperature. Storage at +4°C may DECREASE the shelf life.

Shipping conditions:

Shipping at ambient temperature.
All shipping methods are acceptable.

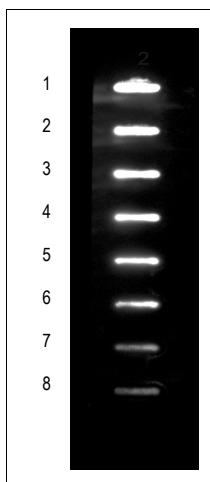
Quality control analysis and expected results:

The reagents are tested by incubation for 2 minutes with nitrocellulose strips containing eight serial dilutions of secondary antibody conjugated with HRP in the range from 5ng to 40pg followed by imaging in a CCD digital imager.

In standard imaging conditions with acquisition time below 10 seconds all eight bands should be observed.

Both reagents included in the kit may be tested together or separately in combination with a previously tested component that has passed the quality control test.

Lot specific information:



Imaging in Fluorchem Q

Lens aperture setting: 2
Exposure time: 8s